

A

B

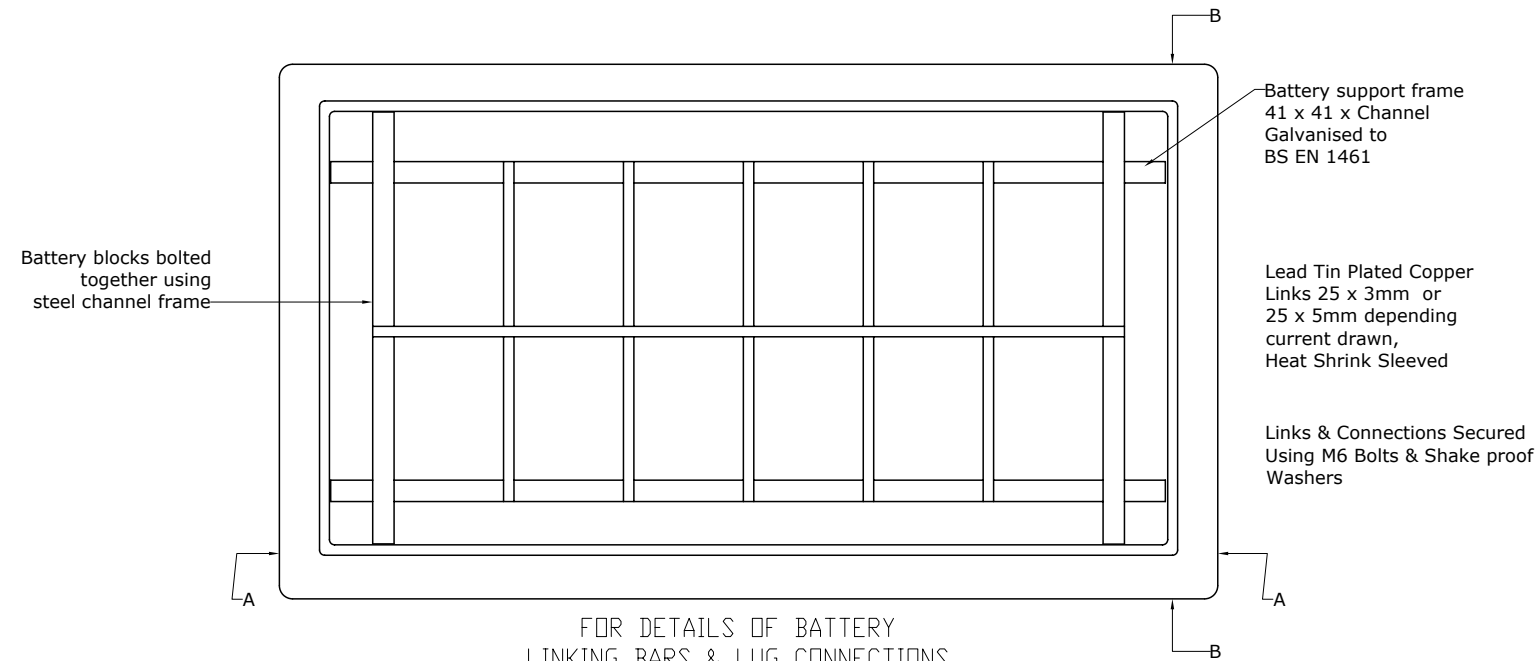
C

D

E

F

Plan View of Battery Box - Cover Removed Showing 12 x OPzV1200 Batteries Fitted



Battery blocks bolted together using steel channel frame

Battery support frame
41 x 41 x Channel
Galvanised to
BS EN 1461Lead Tin Plated Copper
Links 25 x 3mm or
25 x 5mm depending
on current drawn,
Heat Shrink SleevedLinks & Connections Secured
Using M6 Bolts & Shake proof
WashersFOR DETAILS OF BATTERY
LINKING BARS & LUG CONNECTIONS
SEE DRAWING 40500X-02-??FOR EXTERNAL ARRANGEMENT
SEE DRAWING 40500X-01

DETAILS OF BATTERY TYPES THAT CAN BE INSTALLED IN THE ENCLOSURE

Option	Type	Tot. Cells	Modules	Ah/Cell	Wh	Length	Width	Height
TBA	800	6	N/A	800	4800	1146	210	696
TBA	1000	6	N/A	1000	6000	1398	210	695
TBA	1200	6	N/A	1200	7200	1650	210	695
TBA	800	12	N/A	800	4800	1146	420	695
TBA	1000	12	N/A	1000	6000	1398	420	695
TBA	1200	12	N/A	1200	7200	1650	420	695

NOTES

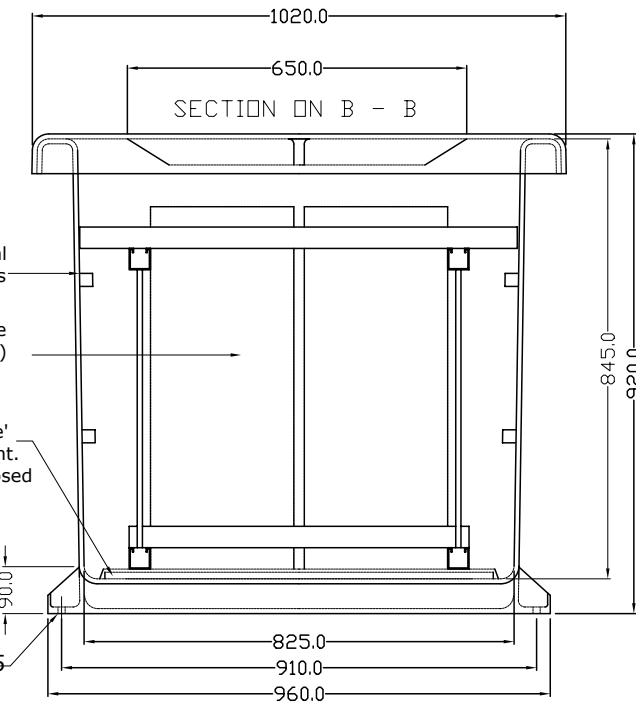
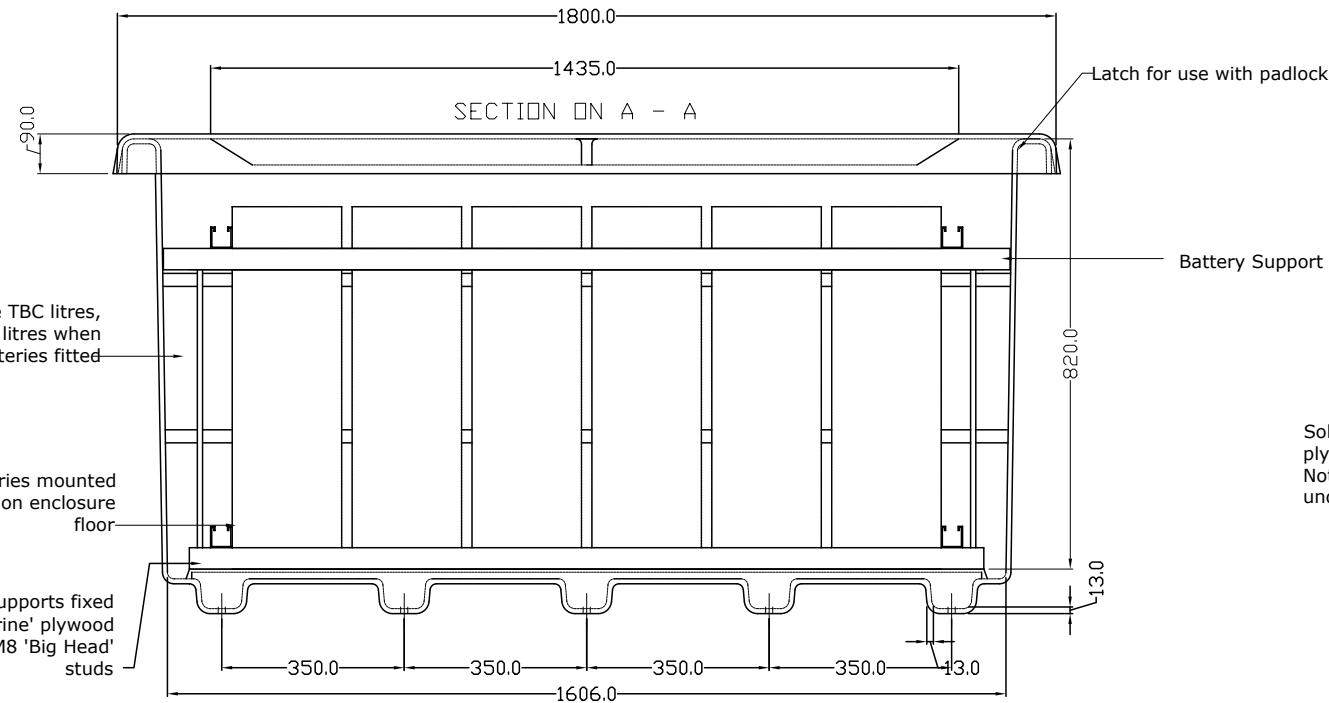
- 1) All eyelets to be coated with suitable grease or petroleum jelly
- 2) Cell details 6 or 12 OPzV sealed battery cells
Nominal 2.0V per cell, Ah as detailed (each cell)
- 3) Routine tests for electrical strength in accordance with 6.8.1 of EN 60079-15 shall be carried out
- 4) Maximum current drawn to be limited to TBC amps for OPzV 200, TBC amps for OPzV 250 to 600 & TBC amps for OPzV 800 to 1200. The maximum current shall be limited by external circuit breaker or fuses. (To be provided by user)

1

2

3

4



This drawing is copywrite and the property of Solapak Systems Limited. It must not be copied (in part or in whole), used for manufacture or otherwise disclosed without prior written consent of the company. Any copies of this drawing must also include a copy of this legend.

SPK Issue	Remarks	Date	SPK Issue	Remarks	Date	Material	Acid resist GRP Except Where Shown
1	Preliminary Issue	2009-03-13				Finish	White Exterior Silk Finish
2	Approval Issue	2009-05-27					
							Alphabetic revisions are provisional
							© 2009 Solapak Systems Limited

Do not scale. If in doubt, ask.

Scale : NTS A3 original
Dim : Unit : Tolerances
 Linear : mm : 0±0.4 0.0±0.2 0.00±0.1
 Angular : degrees : ±1°

Title : Ex nA II T6 Battery Box Type 405006
 For VRLA (opZv) Batteries
 Battery Enclosure Internal Arrangement

DWG Ref : 405006-02

CAD Ref : 405006-02-R02

Sheet 2 of 2
 Drawn CNC
 Date 2009-05-27



Solapak Systems Limited
 Wellington House
 Lower Icknield Way, Longwick
 Bucks, HP27 9RZ, UK
 T: +44 (0) 1844 342557
 F: +44 (0) 1844 346309