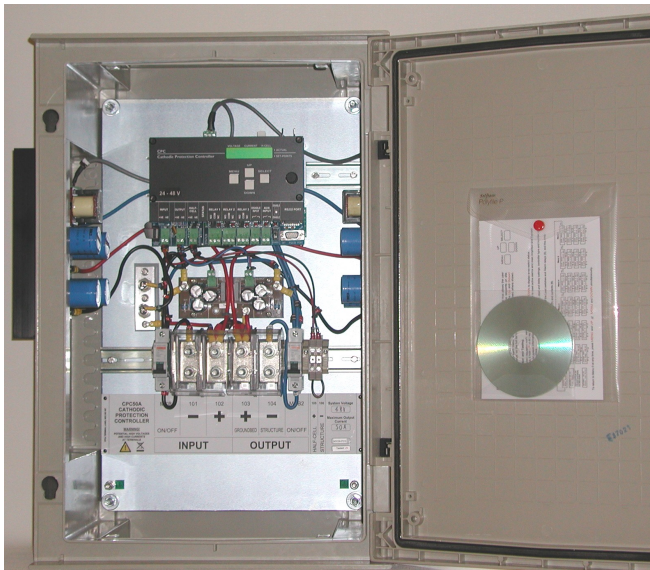


## CPC25A and CPC50A Cathodic Protection Controllers



The CPC25A and CPC50A are part of the new generation of Cathodic Protection Controllers, which feature microprocessor control, three programmable alarm/function relays, built-in interrupt timer, and an RS232 Port with Data Logging as standard.

The two-line alphanumeric LCD displays by default the operating parameters of the unit: the output voltage set-point and actual, output current set-point and actual and half-cell (reference electrode) voltage set-point and actual. Active alarms are indicated and, using the keypad and digital potentiometer, it is also used to set up other parameters, such as low current and high current alarms, auxiliary input mode and the interrupt timer.

The CPC controller is available as chassis plate sub-assemblies, or housed in painted steel, stainless steel or GRP enclosures, and include GDT and MOV protection against lightning and other induced surges.

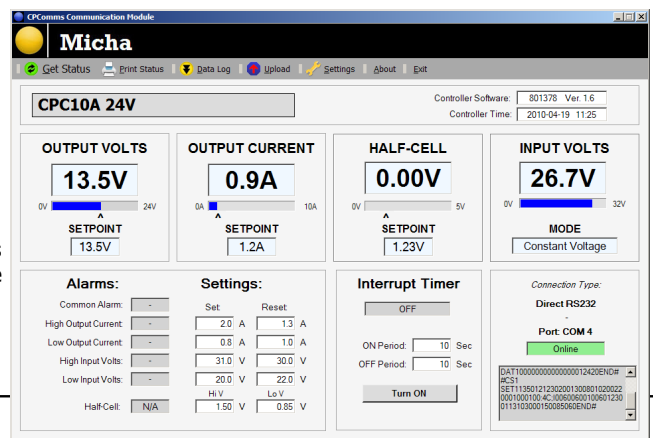
### Operation:

The CPC range is capable of operating with any suitable DC power source. High speed pulse-width-modulated (PWM) switching technology is used to obtain high conversion efficiency. The controllers can operate in one of three modes: constant voltage, constant current and half-cell voltage control with automatic changeover of control mode. The half-cell input can be sampled every 60 seconds (adjustable) with the input reverting to high impedance between sampling to prevent loading of the half-cell.

### Communications and Data Logging:

The CPC25A and CPC50A are supplied with an RS232 port which includes data logging. When connected to a PC or laptop, all main parameters and the present status can be viewed. The main set points and relay settings can be uploaded, and over 10,000 timed log events downloaded.

The logging period can be set to 15, 30 or 60 minute intervals and the addition of a GSM or PSTN modem allows full remote access and control.



### Main Specifications:

|                               |  |
|-------------------------------|--|
| Input Voltage Range:          | 12V System: 10V to 16V : 24/48V Systems: 20V to 64V Positive Common Only   |
| Max. Output Current:          | 25A or 50A<br><i>(Adjustable in 0.1A steps)</i>  |
| Max Output Voltage:           | 12/24/48V or Input Voltage<br><i>(Adjustable in 0.1V steps)</i>  |
| Data Log Capacity:            | Timed events: 10,208 max.      Alarm events: 2,048 max.  |
| Programmable Relay Functions: | Low Input Volts      System Normal/Common Alarm<br>Low Output Current      System (Output) Disabled<br>High Output Current      Auxiliary Input Active |
| Interrupt Timer settings:     | On: 1 to 9,999 seconds      Off: 1 to 9,999 seconds  |
| Operating Temperature range:  | -10°C to +58°C   |
| Enclosure rating:             | Painted Steel and Stainless Steel: IP66 : GRP : IP65   |
| Enclosure dimensions:         | Steel (25A): 600 x 400 x 200mm      GRP (25A and 50A):   |