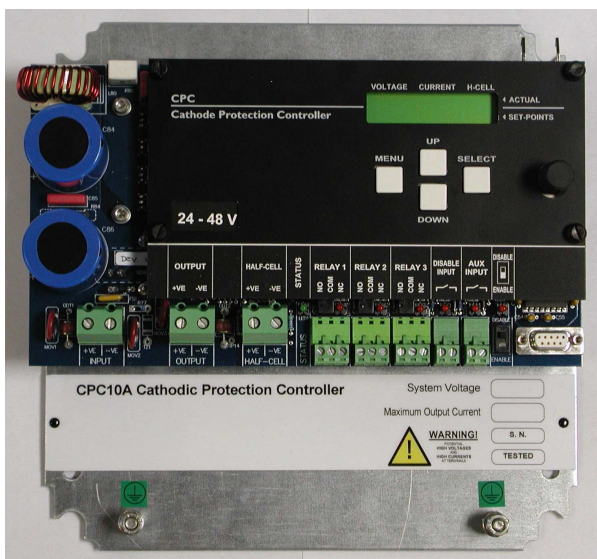


CPC 10A Cathodic Protection Controller



The CPC10A is part of the new generation of Cathodic Protection Controllers, featuring microprocessor control, three programmable alarm/function relays, built-in interrupt timer, and optional RS232 Port with Data Logging.

The two-line alphanumeric LCD displays by default the operating parameters of the unit: the output voltage set-point and actual, output current set-point and actual and half-cell (reference electrode) voltage set-point and actual. Active alarms are indicated and, using the keypad and digital potentiometer, it is also used to set up other parameters, such as low current and high current alarms, auxiliary input mode and the interrupt timer.

The CPC10A, available as a chassis plate sub-assembly, or housed in painted steel, stainless steel or GRP enclosures, includes GDT and MOV protection against lightning and other induced surges.

Operation:

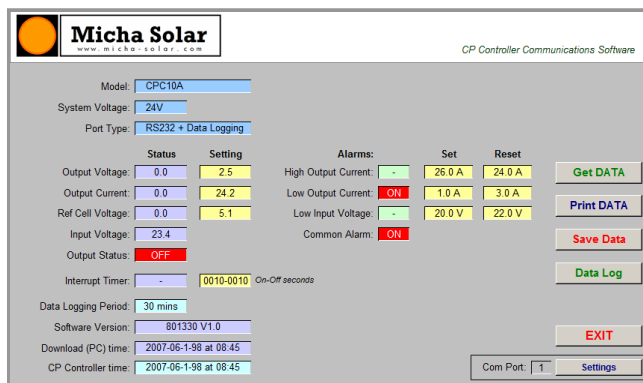
The CPC10A is capable of operating with any suitable DC power source. High speed pulse-width-modulated (PWM) switching technology is used to obtain high conversion efficiency. The CPC10A can operate in one of three modes: constant voltage, constant current and half-cell voltage control with automatic changeover of control mode. The half-cell input can be sampled every 60 seconds (adjustable) with the input reverting to high impedance between sampling to prevent loading of the half-cell.

Communications and Data Logging:

The CPC10A can be supplied with the RS232 port option which includes data logging. When connected to a PC or laptop, all main parameters and the present status can be viewed. The main set points and relay settings can be uploaded, and over 10,000 timed log events downloaded.

The logging period can be set to 15, 30 or 60 minute intervals and the addition of a GSM or PSTN modem allows full remote access and control.

(Please note: The current communications software runs under Microsoft® Excel® versions 2000-2003.)



Main Specifications:		
Input Voltage Range:	12V System: 10V to 16V : 24/48V Systems: 20V to 64V Positive Common Only	
Max. Output Current:	10A	(Adjustable in 0.1A steps)
Max Output Voltage:	12/24/48V or Input Voltage	(Adjustable in 0.1V steps)
Data Log Capacity:	Timed events: 10,208 max.	Alarm events: 2,048 max.
Programmable Relay Functions:	Low Input Volts Low Output Current High Output Current Common Alarm	System Normal System (Output) Disabled Auxiliary Input Active
Interrupt Timer settings:	On: 1 to 9,999 seconds	Off: 1 to 9,999 seconds
Operating Temperature range:	-10°C to +58°C	
Enclosure rating:	Painted Steel and Stainless Steel: IP66 : GRP : IP65	
Enclosure dimensions:	Steel: 300 x 300 x150mm	GRP: 430 x 330 x 200mm (H x W x D)



CPC 10A Cathodic Protection Controller

Solapak Systems Limited
Wellington House
Lower Icknield Way, Longwick
Bucks, HP27 9RZ, UK
T: +44 (0) 1844 275380
F: +44 (0) 345155
E: sales@solapak.co.uk
W: <http://www.solapak.co.uk>

--	--	--